



Dual Head Pocket Ultrasound

C10TX Pro

USB & WiFi



FDA CE ISO
www.kontedmed.com

Innovative Design

Revolutionary Design



Dual Heads 3-in-1
(Convex + Linear + Cardiac)



High-Definition Imaging
192 elements, 64 channels



Light & Portable
Suitable for complex scenarios



Point-of-care Ultrasound

Scan more with one probe



Anti-skid design

- Safer and more reassuring operation



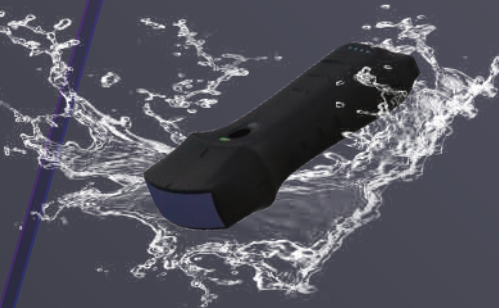
Only 193g

- Smaller than iPhone
- USB&WiFi 2 connections



Built-in 2 batteries

- Wireless charging
- Support working while charging by cable



Full Waterproof

IP68 level
Built-in cooling coating



4 colors for you

Probe Specs

Convex+Cardiac

Linear



Convex array probe
Freq: 3.2/5MHz
Depth: 90-305mm
Radius: R60
Scan angle: 45°

Cardiac probe
Freq: 2.5/5MHz
Depth: 90-200mm
Scan angle: 80°

Linear array probe
Freq: 7.5/10MHz
Depth: 20-100mm
Footprint: L 34mm

Presets:

- Abdomen
- Gynecology
- Obstetric
- Cardiac
- Urology
- Kidney
- Lung

Presets:

- Cardiac
- Abdomen

Presets:

- Thyroid
- Small Parts
- Pediatrics
- Vascular
- VesselFlow
- carotid
- Breast
- MSK
- Nerve
- Aesthetics

Common Specs



Measurement:

B Mode: Length, Length Ratio, Area/Circumference, Angle, Trace, Area Ratio, Distance, GA(CRLBPD,GS,FL,HC,AC) EFW(BPD,FL)

B+M Mode: Heart rate, Time, Distance, LVID(LVIDd, LVIDs, EF, SV)

B+PW Mode: Velocity, Heart rate(2), S/D, VTI, Distance, Time.

Automatic Vessel Flow Measure: PS, ED, TAMAX TAMEAN, PI RI S/D, DIAM,FL
Dual screens: volume measurement



Element: Dual 192

Connection: USB&WiFi

Channel:Dual 64

Display mode: B, B/M Color, PW, PDI ,B+Color+PW

Dimensions:

125mm*59mm*31mm

Presets: 16+

Body Mark: 80+



Image frame rate: 24f/s

Cine play: 100/200/500/1000

Auto play, Manual play

Image save: jpg, avi, MP4 and DICOM

WiFi type: Built-in WiFi

802.11g/20MHZ/5G/1450Mbps

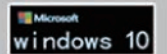
USB type: Dual Type-C

Host:

Android/IOS/Windows

Tablet/Smart phone/PC

Download“MY USG” from App Store / Google Play



Compatibility

- ✓ IOS 11.0 or later.
iphone7(plus) ~ iphone13 series or later
ipad Air2 ~ipad mini 5-ipad Pro series
or later
- ✓ Android 14 or later
- ✓ Windows 10 version PC

Friendly Operating Interface

Datasheet

.You can save the scanned picture, video, report.



Dual screen

.Analyze and compare Imaging in any 2 modes.



Multiple modes

.Switch between B, B+B, B/M, Color, PW, PDI, B+Color+PW.



Print

.The imaging or report of patient can be printed by printer.



Annote

.Doctors can add markers or notes on the imaging.



Measure Magnify

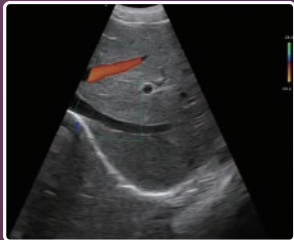
.Measure the boundary of smaller target more accurately.



Clinical Image



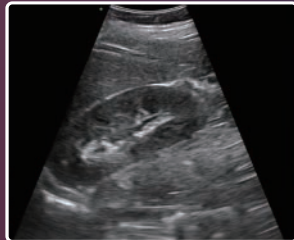
Convex probe



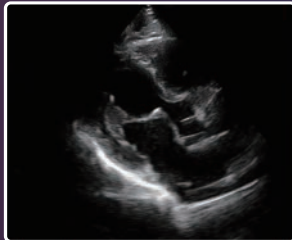
B+Color Liver



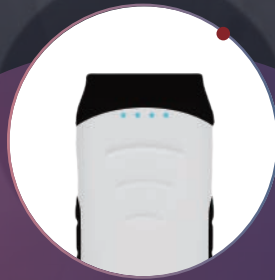
B Fetus



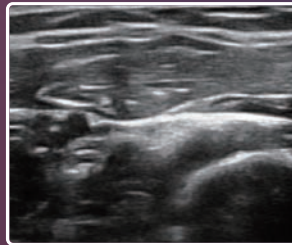
B Kidney



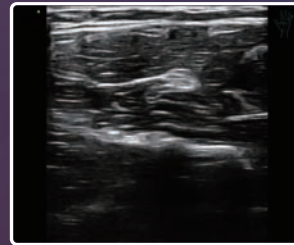
B Cardiac



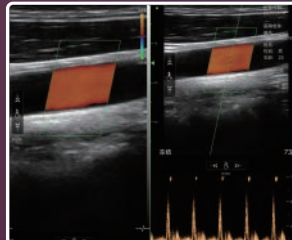
Linear probe



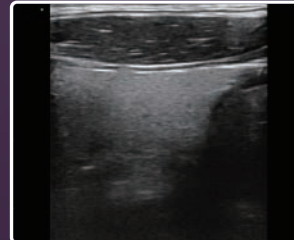
B MSK



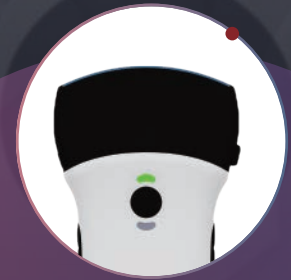
B Nerve



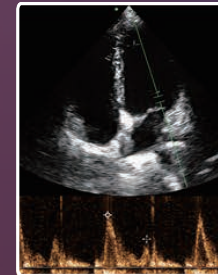
Color+PW Artery



B Thyroid



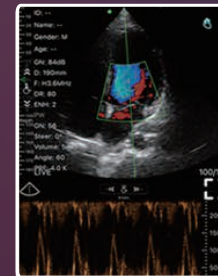
Cardiac probe



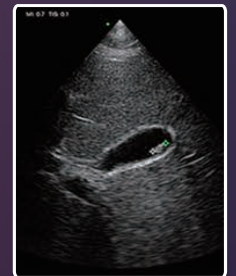
B+PW



B Cardiac



B+Color+PW



B Gallbladder