

# Mobilny Ultrasonograf

## C10TX pro USB & WiFi

## Revolutionary Design

192 elementy



**Dual Heads 3-in-1**  
(Convex + Linear + Cardiac)



**High-Definition Imaging**  
192 elements, 64 channels



**Light & Portable**  
Suitable for complex scenarios

[www.medicalspot.pl](http://www.medicalspot.pl)





FDA CE ISO

# Point-of-care Ultrasound

## Scan more with one probe



### Anti-skid design

- Safer and more reassuring operation



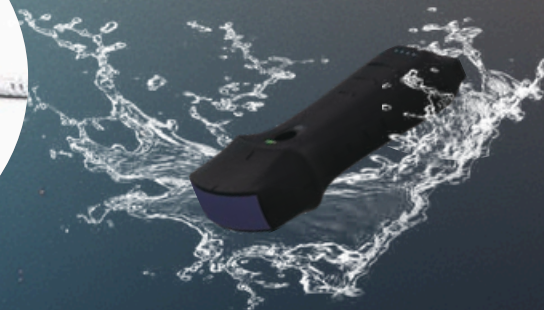
### Only 193g

- Smaller than iphone
- USB&WiFi 2 connections



### Built-in 2 batteries

- Wireless charging
- Support working while charging by cable



### Full Waterproof

IP68 level  
Built-in cooling coating



## 4 colors for you



# Probe Specs

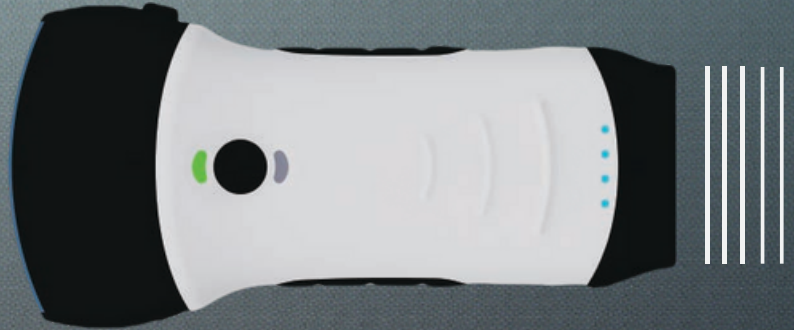
## Convex+Cardiac



Convex array probe  
Freq: 3.2/5MHz  
Depth: 90-305mm  
Radius: R60  
Scan angle: 45°

### Presets:

- Abdomen -Urology
- Gynecology -Kidney
- Obstetric -Lung
- Cardiac



**125mm**  
N.W:193g

Cardiac probe  
Freq: 2.5/5MHz  
Depth: 90-200mm  
Scan angle: 80°

### Presets:

- Cardiac
- Abdomen

## Linear



**34mm**

Linear array probe  
Freq: 7.5/10MHz  
Depth: 20-100mm  
Footprint: L 34mm

### Presets:

-Thyroid	-carotid
-Small Parts	-Breast
-Pediatrics	-MSK
-Vascular	-Nerve
-VesselFlow	-Aesthetics



# Common Specs



## Measurement:

**B Mode:** Length, Length Ratio, Area/Circumference, Angle, Trace, Area Ratio, Distance, GA(CRLBPD,GS,FL,HC,AC) EFW(BPD,FL)

**B+M Mode:** Heart rate, Time, Distance, LVID(LVIDd, LVIDs, EF, SV)  
**B+PW Mode:** Velocity, Heart rate(2), S/D, VTI, Distance, Time.

**Automatic Vessel Flow Measure:** PS, ED, TAMAX TAMEAN, PI RI S/D, DIAM,FL

**Dual screens:** volume measurement



**Element:** Dual 192

**Connection:** USB&WiFi

**Channel:**Dual 64

**Display mode:** B, B/M Color, PW, PDI ,B+Color+PW

**Dimensions :**

125mm\*59mm\*31mm

**Presets:** 16+

**Body Mark:** 80+



**Image frame rate:** 24f/s

**Cine play:** 100/200/500/1000

**Auto play,** Manual play

**Image save:** jpg, avi, MP4 and DICOM

**WiFi type:** Built-in WiFi

802.11g /20MHZ/5G/1450Mbps

**USB type:** Dual Type-C

**Host:**

Android/IOS/Windows

Tablet/Smart phone/PC

## Download“MY USG” from App Store / Google Play



## Compatibility

√ IOS 11.0 or later.

iphone7(plus) ~ iphone13 series or later  
ipad Air2 ~ipad mini 5-ipad Pro series  
or later

√ Android 14 or later

√ Windows 10 version PC



# Friendly Operating Interface

## Datasheet



.You can save the scanned picture, video, report.

## Dual screen



.Analyze and compare Imaging in any 2 modes.

## Multiple modes



.Switch between B, B+B, B/M, Color, PW, PDI, B+Color+PW.

## Annote



.Doctors can add markers or notes on the imaging.

## Print



.The imaging or report of patient can be printed by printer.

## Measure Magnify



.Measure the boundary of smaller target more accurately.





# Clinical Image



**Convex probe**



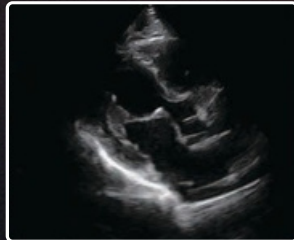
**B+Color Liver**



**B Kidney**



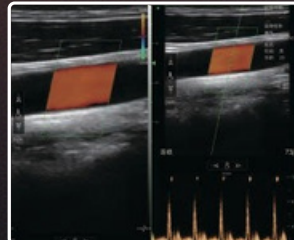
**B Fetus**



**B Cardiac**



**B MSK**



**Color+PW Artery**



**Linear probe**



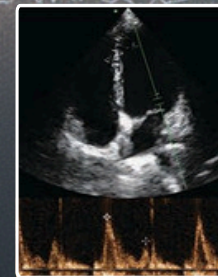
**B Nerve**



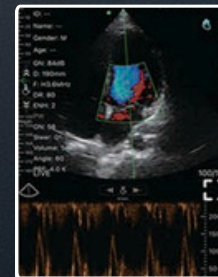
**B Thyroid**



**Cardiac probe**



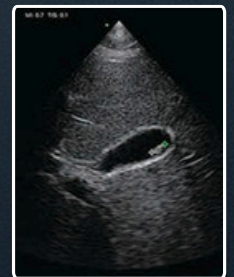
**B+PW**



**B+Color+PW**



**B Cardiac**



**B Gallbladder**